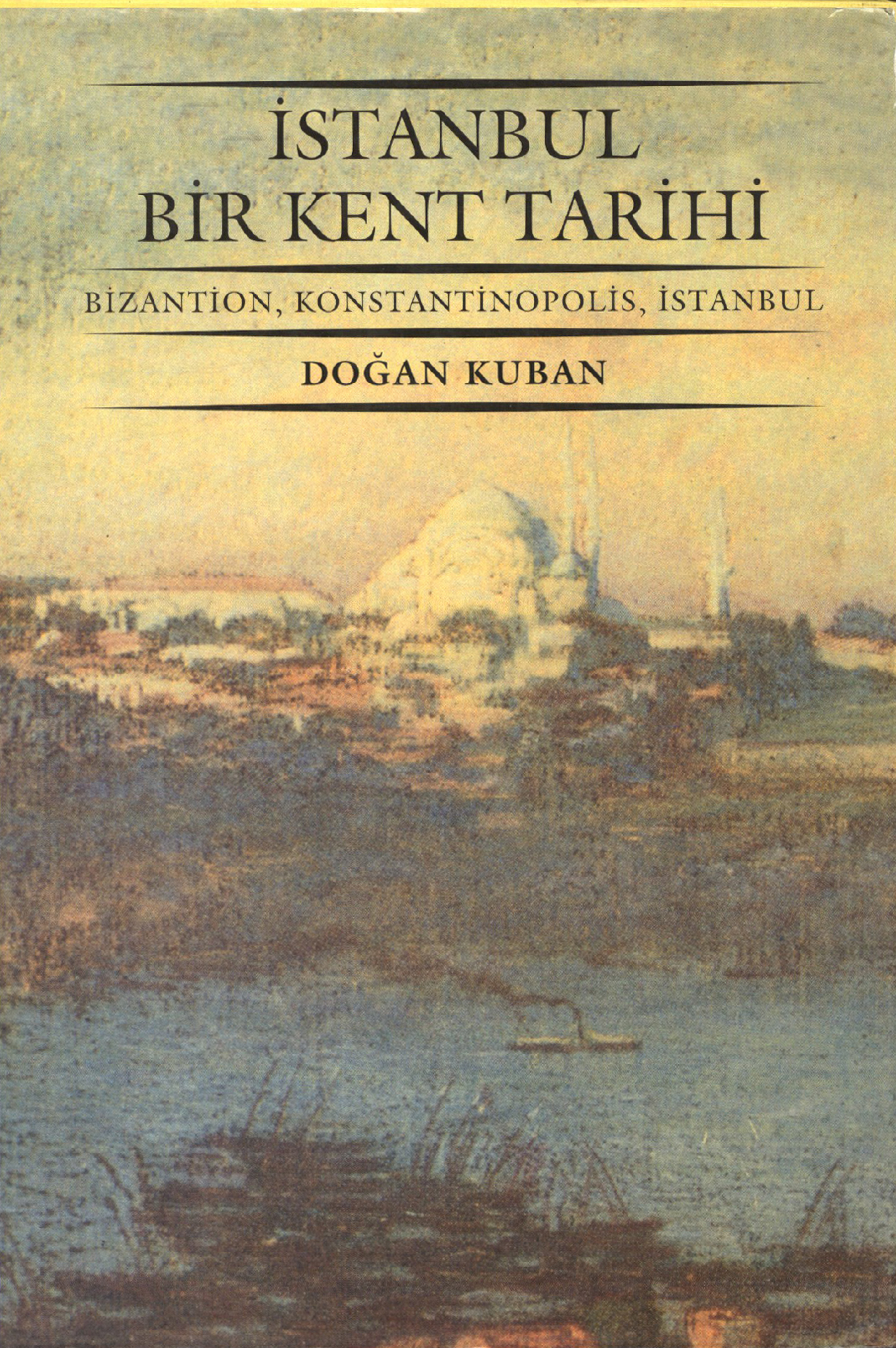
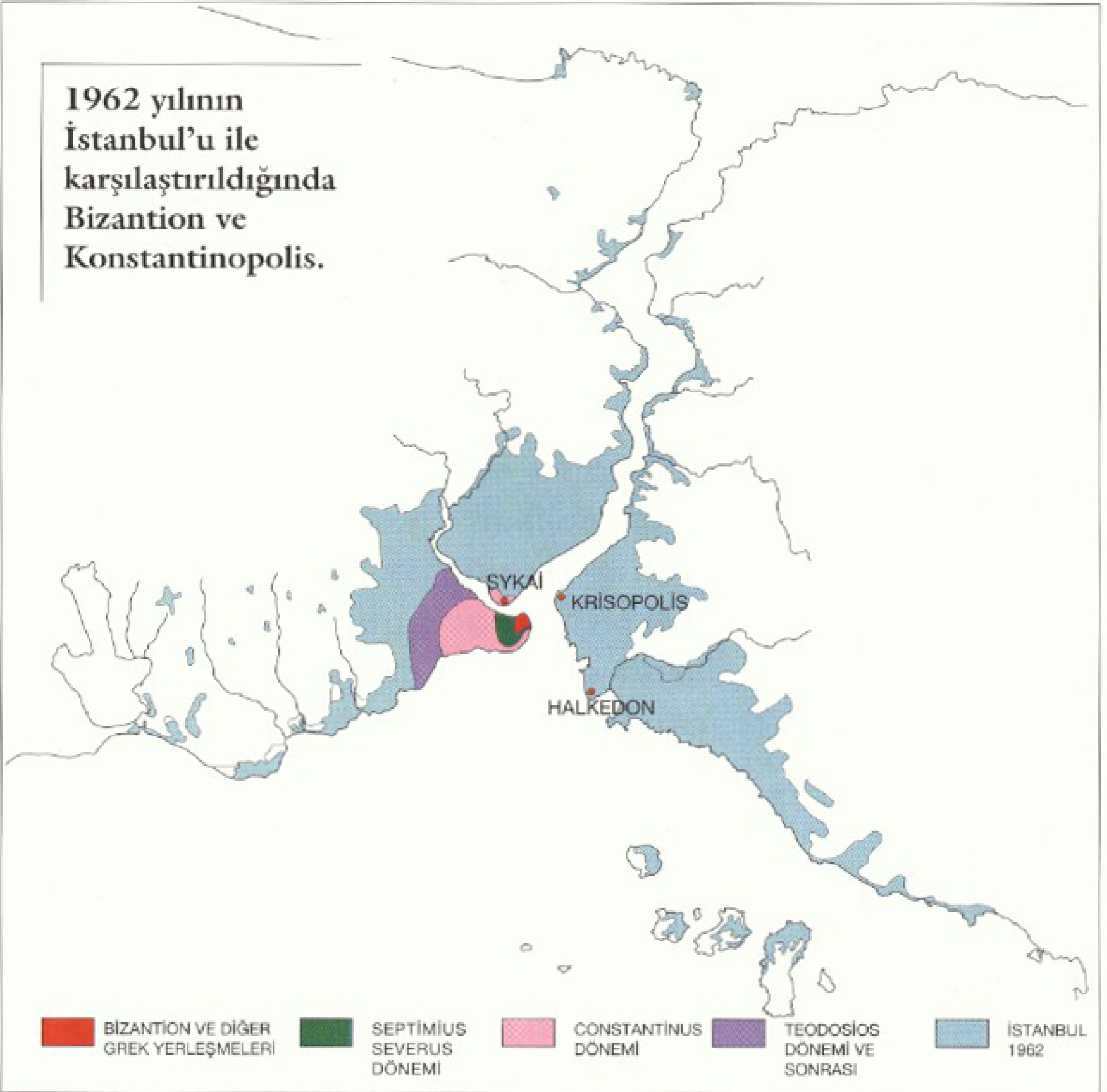

İSTANBUL BİR KENT TARİHİ

BİZANTİON, KONSTANTİNOPOLİS, İSTANBUL

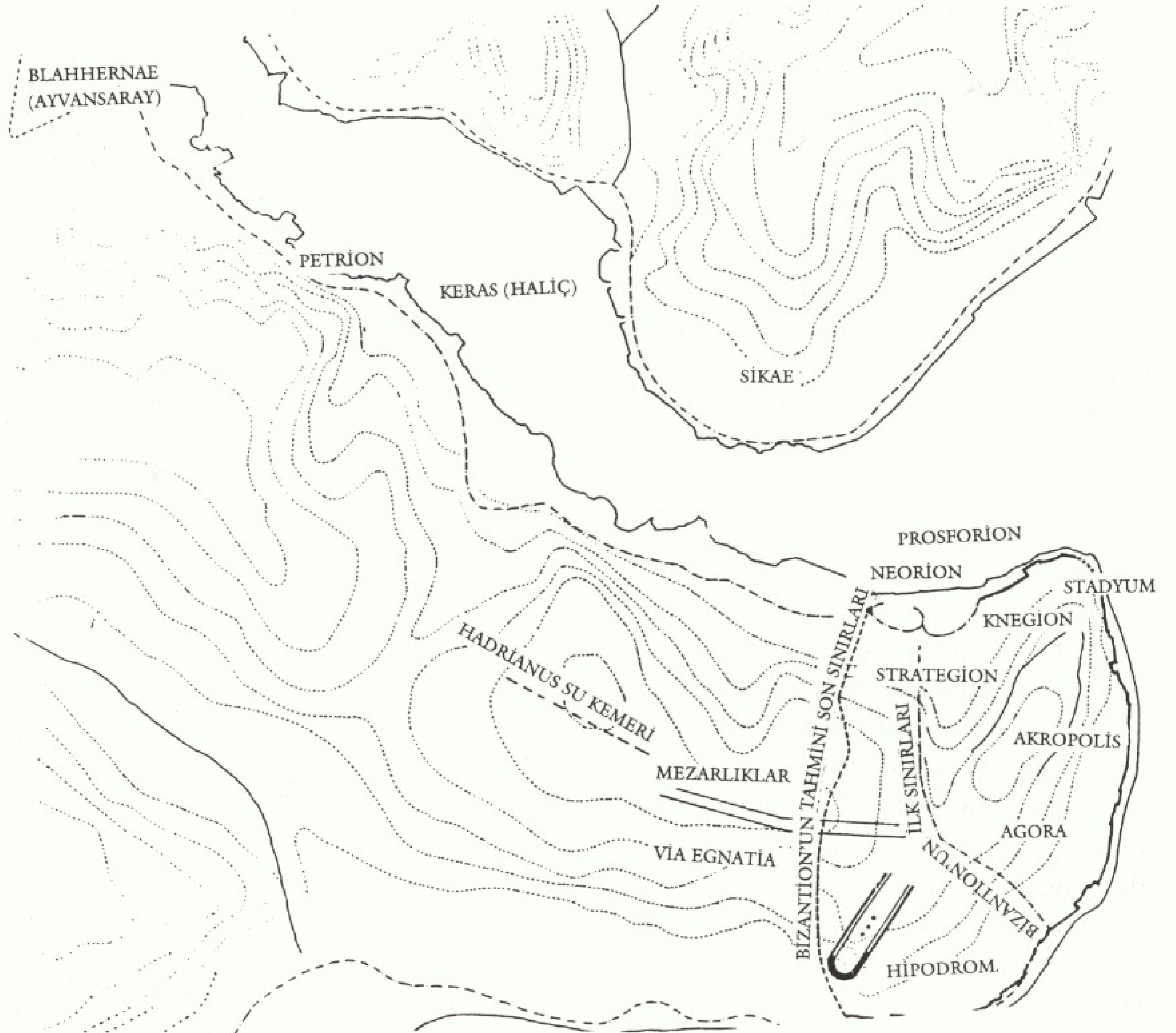
DOĞAN KUBAN



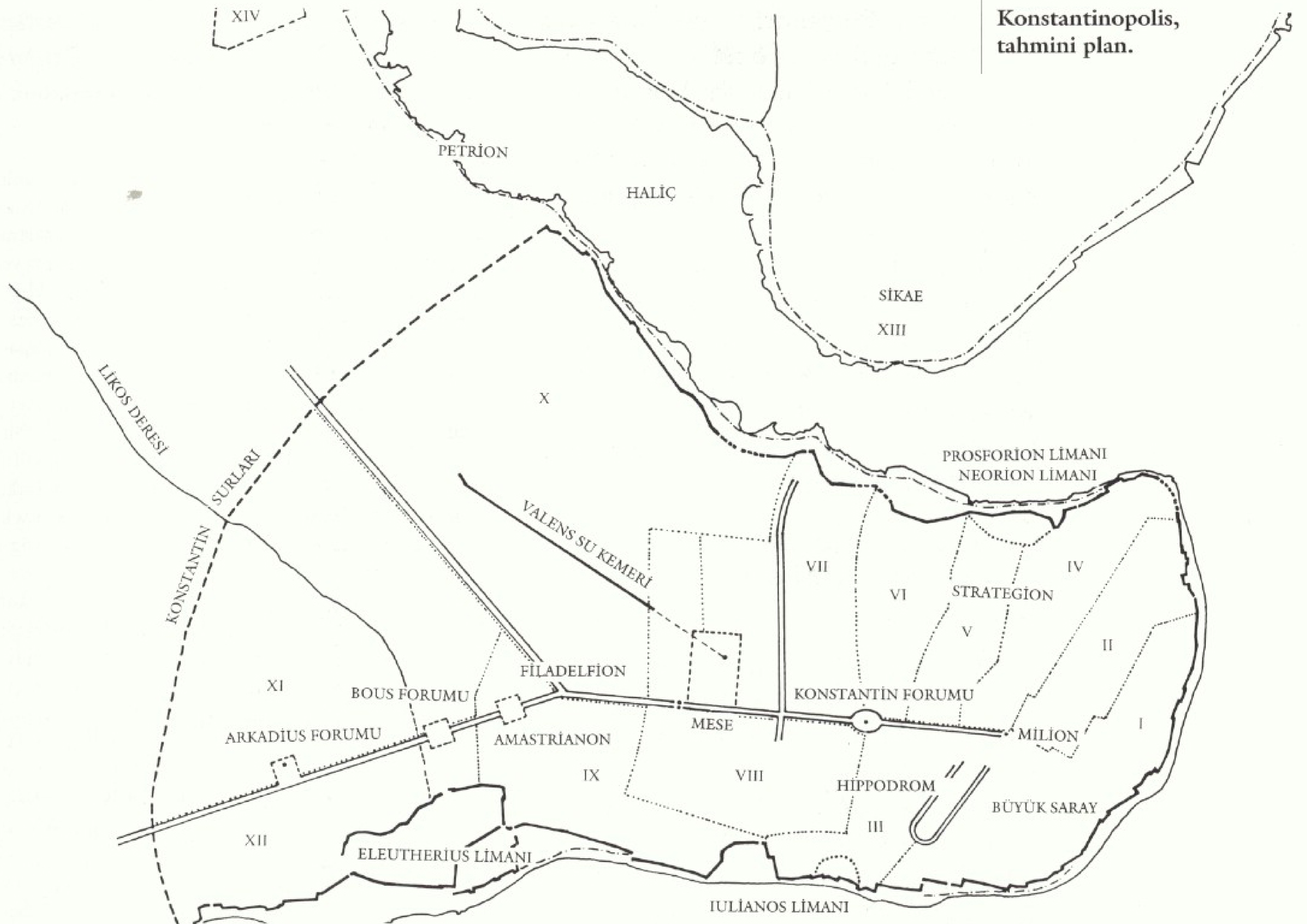
1962 yılının
İstanbul'u ile
karşılaştırıldığında
Bizantion ve
Konstantinopolis.

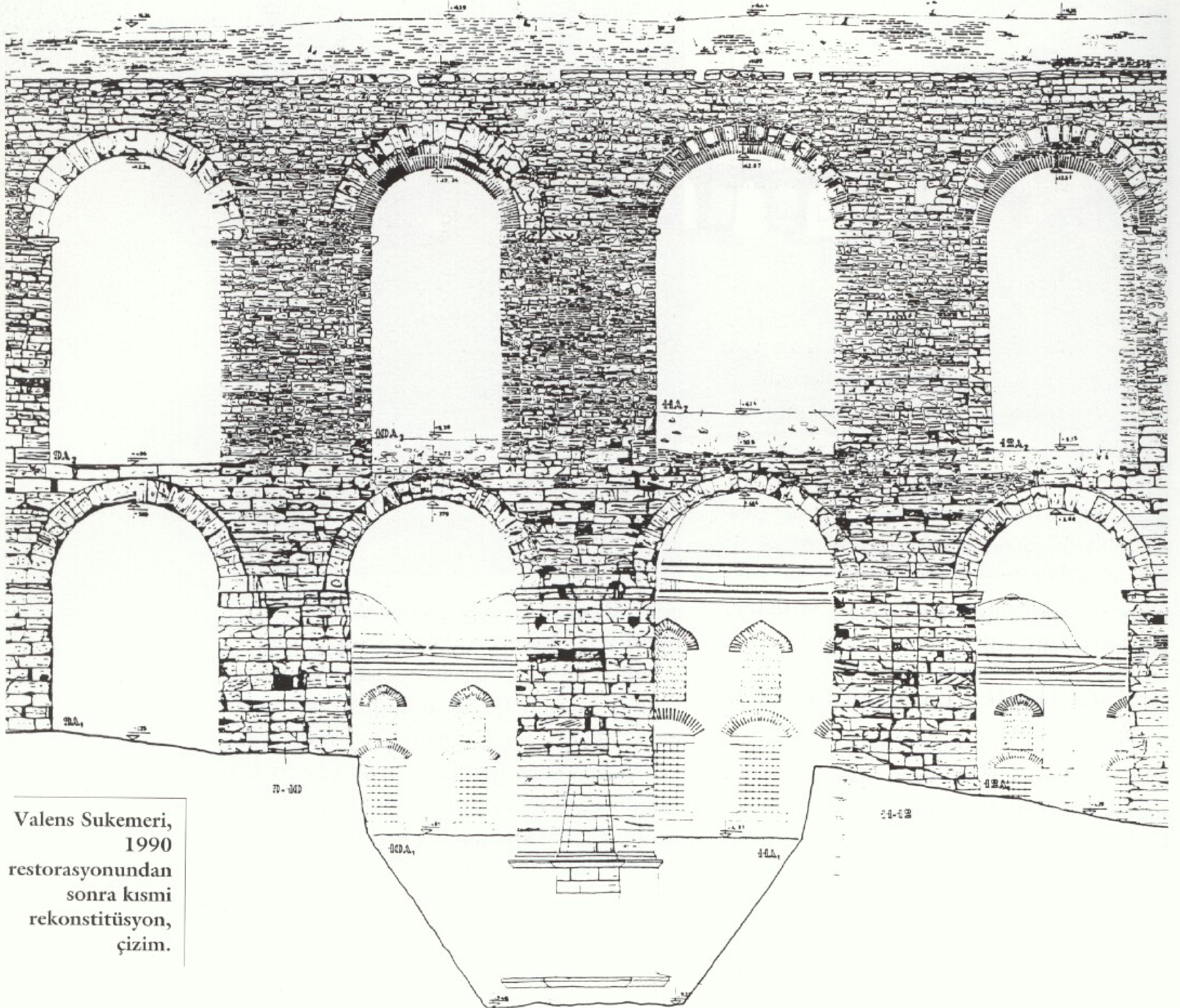


Bizantion, ilk
ve sonuncu
surlar (tahmini).



Konstantinopolis,
tahmini plan.





Valens Sukemeri,
1990
restorasyonundan
sonra kısmi
rekonstitüsyon,
çizim.



Kent planı, 1453-1520.